

CSSD-SPD & Operating Theatre

CSSD-SPD & Operating Theatre

Sterisystem® Dry-Base® instrument trays	3
Steri-TOP lid	7
Steri-ID loop.....	11
Sterisystem® Dry-Base® Steri-ID instrument trays	13
CSSD Packing Tables.....	17
Stackers for Sterisystem® Perfo-Safe® wire baskets and shelves	23
Sterisystem® Perfo-Safe® wire baskets.....	25
Sterisystem® Perfo-Safe® wire shelves	29
Silicon mat	31
Sterisystem® open Stericart - 18006 series	33
Sterisystem® closed Stericart.....	37
Closed aluminum transport carts	43
Closed ISO stainless steel transport carts	45
UBeFlex® storage system	49
UBeTrack™ mobile storage system.....	61

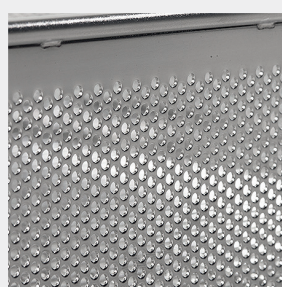
Sterisystem® Dry-Base® instrument trays



Our Sterisystem® Dry-Base® instrument trays have been manufactured from highly polished AISI 304 grade stainless steel.

Our continuous quality control throughout the production process guarantees quality and dimensional stability. Therefore we offer a 10 year warranty on all our Sterisystem® Dry-Base® instrument trays. Thanks to their smooth and dimensionally stable base, you can rest assured that all your instruments will firmly stay in place. Careful attention has been paid to preventing perforations in packaging and great thought has been put into helping you optimise your sterilisation process.

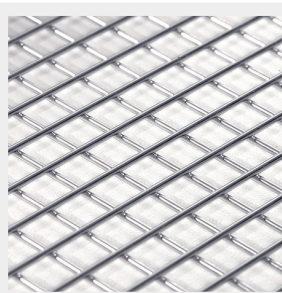
Our Sterisystem® Dry-Base® instrument trays come with a perfectly finished top wire which reduces the chance of perforations to a minimum and a 10 year warranty.



» Punch pattern

The fine, 2 mm holes made by the punch pattern guarantee a permeability of more than 50%, which can only benefit the washing process. As steam and water can readily penetrate during the sterilisation and washing process, an optimum result is guaranteed.

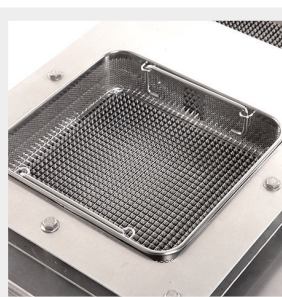
The sides protect the instruments against damage and have been designed to accommodate extra fine instruments.



» Dry-Base®

The smooth, dry base completely traps any condensation moisture that may stick to the packaging. This ensures that condensation moisture can heat up or evaporate under the influence of radiation, convection or conduction.

Our Sterisystem® Dry-Base® instrument trays come with a perfectly finished, top wire which reduces the chance of perforations to a minimum.



» Quality control tool

For quality-assurance purposes, all our trays are put through a special quality control tool. To make sure that the mesh is uniform in size, the base over every tray is meticulously checked, which is vital of course if we want to ensure that your instruments remain firmly in place.

Baskets that do not meet the dimensional or quality standards are rejected during quality control.



» Top wire

The upper wire is made from plasma that has been welded on to the sides of the tray. This results in a beautifully finished product that is devoid of any sharp edges and dispenses with the risk of perforations during unpacking. The upper wire also ensures that the top of the tray cannot become contaminated by dirt.



» Universal sizes

Both the DIN and ISO Sterisystem® Dry-Base® instrument trays come in universal sizes and fit perfectly into the Sterisystem® Perfo-Safe® wire trays.

Our Sterisystem® Dry-Base® instrument trays are fitted with 2 handles (except the DIN 1/4 and ISO 1/4 sizes) and have a load-bearing capacity of 15 kg.



» Material

The Sterisystem® Dry-Base® instrument trays are manufactured from AISI 304 grade stainless steel and come with an electrolytically polished finish. The composition of the material is checked by an external knowledge centre.



» Shape

The Sterisystem® Dry-Base® instrument trays have been manufactured in such a way that you will never have to worry about holes or cavities that could harbour dirt.



» Bar code zone

For identification and traceability purposes, the Sterisystem® Dry-Base® instrument trays come with a bar code zone.

» Sterisystem® Dry-Base® instrument trays



» Type 60H - DIN Sterisystem® Dry-Base® instrument trays

Article Number	Description	GTIN	Ext. Dimensions
30006 00005	DIN 1/4	05404019100006	120 x 250 x 64 mm
30006 00007	DIN 1/2	05404019100013	240 x 250 x 64 mm
30006 00041	DIN 3/4	05404019100020	360 x 250 x 64 mm
30006 00012	DIN 1/1	05404019100037	480 x 250 x 64 mm



» Type 100H - DIN Sterisystem® Dry-Base® instrument trays

Article Number	Description	GTIN	Ext. Dimensions
30006 00020	DIN 1/2 H	05404019100044	240 x 250 x 100 mm
30006 00011	DIN 1/1 H	05404019100051	480 x 250 x 100 mm



» Type 60H - ISO Sterisystem® Dry-Base® instrument trays

Article Number	Description	GTIN	Ext. Dimensions
30006 00026	ISO 1/4	05404019100068	120 x 300 x 64 mm
30006 00018	ISO 1/2	05404019100075	240 x 300 x 64 mm
30006 00015	ISO 1/1	05404019100082	480 x 300 x 64 mm



» Type 60H - ISO-2 Sterisystem® Dry-Base® instrument trays

Article Number	Description	GTIN	Ext. Dimensions
30006 00004	ISO-2 1/4	05404019100099	115 x 320 x 64 mm
30006 00006	ISO-2 1/2	05404019100105	230 x 320 x 64 mm
30006 00010	ISO-2 1/1	05404019100112	460 x 320 x 64 mm



Steri-TOP lid



The Steri-TOP lid was designed with simple operation and guaranteed safety for use in a sterile environment in mind.

The instrument lids are made of highly polished AISI 304 grade stainless steel, in accordance with the same quality standards and requirements as our Sterisystem® Dry-Base® instrument trays.

The instrument tray is ergonomically opened by means of four silicone corners. In order to close the instrument tray, the four silicone corners are placed in the correct position and can easily be clicked onto the instrument tray.

The very small number of components, and the materials used, make the Steri-TOP lids the new standard for instrument tray lids, ensuring that no light instruments are blown out of the instrument tray during the sterilisation process.



» Steri-TOP lids sizes

All components are resistant to washing and autoclave sterilisation conditions (high temperatures, steam and vacuum) as well as to the most common chemicals used in hospitals.

The lids are available for DIN 1/4, 1/2, 3/4 and 1/1 and ISO 1/4, 1/2 and 1/1 baskets.



» Stackable

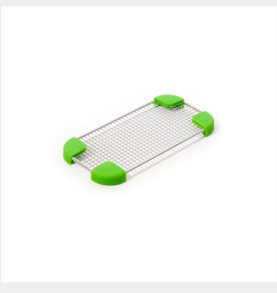
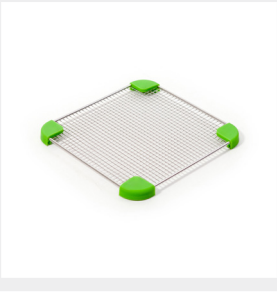

The ingenious design of the lids allows them to be stacked in storage when not in use. The silicone material of which the corners are made functions as an effective anti-slip layer.






» Matching instrument trays

The Steri-TOP lids perfectly match the Sterisystem® Dry-Base® instrument trays.

» Steri-TOP lid - DIN

	» Steri-TOP lid DIN 1/4			
	Article number	Colour corners	GTIN	Ext. dimensions
	30014 00021	Green	05404019100129	120 x 250 x 17 mm
	30014 00020	Yellow	05404019100136	120 x 250 x 17 mm
	30014 00022	Black	05404019100143	120 x 250 x 17 mm
	30014 00023	Blue	05404019100150	120 x 250 x 17 mm
	30014 00024	White	05404019100167	120 x 250 x 17 mm
	30014 00028	Red	05404019100174	120 x 250 x 17 mm
	30014 00056	Purple	05404019100181	120 x 250 x 17 mm
	30014 00057	Petrol blue	05404019100198	120 x 250 x 17 mm
	» Steri-TOP lid DIN 1/2			
	Article number	Colour corners	GTIN	Ext. dimensions
	30014 00014	Green	05404019100204	240 x 250 x 17 mm
	30014 00013	Yellow	05404019100211	240 x 250 x 17 mm
	30014 00015	Black	05404019100228	240 x 250 x 17 mm
	30014 00016	Blue	05404019100235	240 x 250 x 17 mm
	30014 00017	White	05404019100242	240 x 250 x 17 mm
	30014 00027	Red	05404019100259	240 x 250 x 17 mm
	30014 00054	Purple	05404019100266	240 x 250 x 17 mm
	30014 00055	Petrol blue	05404019100273	240 x 250 x 17 mm
	» Steri-TOP lid DIN 3/4			
	Article number	Colour corners	GTIN	Ext. dimensions
	30014 00066	Green	05404019102987	360 x 250 x 17 mm

» Steri-TOP lid - ISO

	» Steri-TOP lid DIN 1/1			
	Article number	Colour corners	GTIN	Ext. dimensions
	30014 00009	Green	05404019100280	480 x 250 x 17 mm
	30014 00008	Yellow	05404019100297	480 x 250 x 17 mm
	30014 00010	Black	05404019100303	480 x 250 x 17 mm
	30014 00011	Blue	05404019100310	480 x 250 x 17 mm
	30014 00012	White	05404019100327	480 x 250 x 17 mm
	30014 00026	Red	05404019100334	480 x 250 x 17 mm
	30014 00052	Purple	05404019100341	480 x 250 x 17 mm
	30014 00053	Petrol blue	05404019100358	480 x 250 x 17 mm
	» Steri-TOP lid ISO 1/4			
	Article number	Colour corners	GTIN	Ext. dimensions
	30014 00045	Green	05404019100365	120 x 300 x 17 mm
	30014 00044	Yellow	05404019100372	120 x 300 x 17 mm
	30014 00046	Black	05404019100389	120 x 300 x 17 mm
	30014 00047	Blue	05404019100396	120 x 300 x 17 mm
	30014 00048	White	05404019100402	120 x 300 x 17 mm
	30014 00049	Red	05404019100419	120 x 300 x 17 mm
	30014 00062	Purple	05404019100426	120 x 300 x 17 mm
	30014 00063	Petrol blue	05404019100433	120 x 300 x 17 mm
	» Steri-TOP lid ISO 1/2			
	Article number	Colour corners	GTIN	Ext. dimensions
	30014 00038	Green	05404019100440	240 x 300 x 17 mm
	30014 00037	Yellow	05404019100457	240 x 300 x 17 mm
	30014 00039	Black	05404019100464	240 x 300 x 17 mm
	30014 00040	Blue	05404019100471	240 x 300 x 17 mm
	30014 00041	White	05404019100488	240 x 300 x 17 mm
	30014 00042	Red	05404019100495	240 x 300 x 17 mm
	30014 00060	Purple	05404019100501	240 x 300 x 17 mm
	30014 00061	Petrol blue	05404019100518	240 x 300 x 17 mm

» Steri-TOP lid - DIN



» Steri-TOP lid ISO 1/1

Article number	Colour corners	GTIN	Ext. dimensions
30014 00031	Green	05404019100525	480 x 300 x 17 mm
30014 00030	Yellow	05404019100532	480 x 300 x 17 mm
30014 00032	Black	05404019100549	480 x 300 x 17 mm
30014 00033	Blue	05404019100556	480 x 300 x 17 mm
30014 00034	White	05404019100563	480 x 300 x 17 mm
30014 00035	Red	05404019100570	480 x 300 x 17 mm
30014 00058	Purple	05404019100587	480 x 300 x 17 mm
30014 00059	Petrol blue	05404019100594	480 x 300 x 17 mm

Steri-ID loop



The Steri-ID loop consists of a silicon loop in which an RFID tag is embedded.

The Steri-ID loop is a high quality complementary technology to the traditional process with barcode stickers for the tracing of the contents of sterilisation containers and Sterisystem® Dry-Base® instrument trays. Barcode stickers are easily damaged, become illegible and hence regularly need to be removed and replaced. The embedded tag however is resistant to washing and sterilization conditions in the autoclave (high temperatures, steam and vacuum) as well as to the most common chemicals used in hospitals. Therefore it can be used for over 400 cycles.

Because of their simple operation and sustainability, Steri-ID loops are a cost-efficient, time-saving and environmentally friendly alternative for the tracing of sterilization containers and instrument trays with barcode stickers.



» Steri-ID tag integrated

The built-in Steri-ID tag is based on ISO 15693 technology. The open platform allows you to choose from different suppliers of RFID writing and reading technologies.

The Steri-ID tag can be scanned through the sterilization packaging; hence no direct viewing is required to trace the contents during the entire sterilization process.



» Different colours

The Steri-ID loops are available in different colours. Herewith different standard surgical sets can be created and visually identified for example for gynecology, orthopedics,... or the sterilisation containers or Sterisystem® Dry-Base® instrument trays can be distinguished for the various campuses operating under the same CSSD.

» Steri-ID loop



» Steri-ID loop - HF

Article number	Colour
30012 00004	Green
30012 00003	Yellow
30012 00005	Black
30012 00006	Blue
30012 00007	White
30012 00028	Red
30012 00033	Purple
30012 00034	Petrol blue

Sterisystem® Dry-Base® Steri-ID instrument trays



Our Sterisystem® Dry-Base® instrument trays with integrated Steri-ID are made in accordance with the same quality criteria as our standard Sterisystem® Dry-Base® instrument trays.

The integrated Steri-ID HF RFID tag is a high quality complementary technology to the traditional process with barcode stickers used to keep track of the contents of Sterisystem® Dry-Base® instrument trays. These stickers are easily damaged, become illegible and as such regularly need to be removed and replaced. The embedded tag how-ever is resistant to washing and sterilization conditions in the autoclave (high temperatures, steam and vacuum) as well as to the most common chemicals used in hospitals. Therefore it can be used for over 400 cycles.

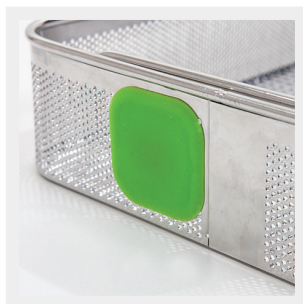
Because of their simple operation and sustainability, Sterisystem® Dry-Base® instrument trays with integrated Steri-ID tags are a cost-efficient, time-saving and environmentally friendly alternative to the traditional instrument trays with barcode stickers.



» Different sizes and colours

The Steri-ID instrument tray is available in different standard sizes and colours. Herewith different standard surgical sets can be created and visually identified for example for gynecology, orthopedics,... or the surgical sets for the various campuses operating under the same CSSD can be distinguished.

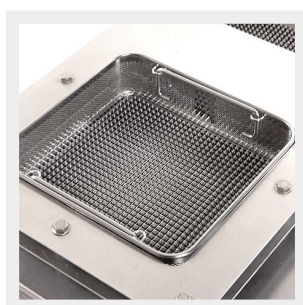
The Sterisystem® Dry-Base® instrument trays are equipped with two handles (except the DIN 1/4 size) and have a load-bearing capacity of 15 kg.



» Integrated Steri-ID tag

The built-in Steri-ID tag is based on ISO 15693 technology. The open platform allows you to choose from different suppliers of RFID writing and reading technologies.

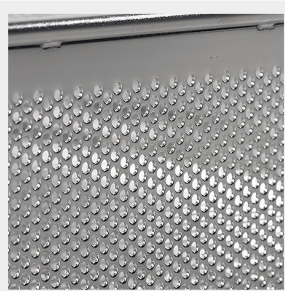
The Steri-ID tag can be scanned through the sterilization packaging; hence no direct viewing is required to trace the contents during the entire sterilization process.



» Quality control

All our baskets are submitted to a quality control by a special control tool. The base of every basket is meticulously checked to make sure that the mesh is uniform in size. This is vital of course to ensure that the instruments remain firmly in place.

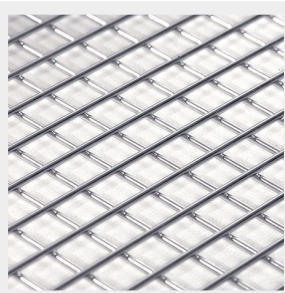
Baskets which do not comply with the dimensional or quality standards are rejected during the quality control.



» Punch pattern

The fine 2 mm holes of the punch pattern ensure a permeability of more than 50%, which is only beneficial for the washing process. As steam and water can readily penetrate during the washing and sterilization processes, a maximum result is guaranteed.

The sides protect the instruments against damage and are suitable for extra fine instruments.



» Dry-Base®

The smooth base remains in full contact with any condensation moisture left on the packaging. Subsequently radiation, convection or conduction can heat or evaporate this condensation moisture.



» Top wire

The top wire is plasma-welded on to the sides of the basket. This results in a perfectly finished product without any sharp edges, which reduces the risk of perforations during unpacking to a minimum.

The top wire is designed in such a way that no dirt can harbor between the sides and the top wire.



» Material and shape

The Sterisystem® Dry-Base® instrument trays are made off AISI 304 grade stainless steel and come with an electrolytically polished finish. The composition of the material is checked by an external knowledge center.

The Sterisystem® Dry-Base® instrument trays have been manufactured in such a way that no cavities are created which could harbor dirt.

» Sterisystem® Dry-Base® Steri-ID instrument trays



» Sterisystem® Dry-Base® Steri-ID instrument trays DIN 1/4

Article number	Tag colour	GTIN	Ext. dimensions
30012 00024	Green	05404019100600	120 x 250 x 64 mm
Upon request	Yellow	05404019100617	120 x 250 x 64 mm
Upon request	Black	05404019100624	120 x 250 x 64 mm
Upon request	Blue	05404019100631	120 x 250 x 64 mm
Upon request	White	05404019100648	120 x 250 x 64 mm
Upon request	Red	05404019100655	120 x 250 x 64 mm
Upon request	Purple	05404019100662	120 x 250 x 64 mm
Upon request	Petrol blue	05404019100679	120 x 250 x 64 mm



» Sterisystem® Dry-Base® Steri-ID instrument trays DIN 1/2

Article number	Tag colour	GTIN	Ext. dimensions
30012 00014	Green	05404019100686	240 x 250 x 64 mm
Upon request	Yellow	05404019100693	240 x 250 x 64 mm
Upon request	Black	05404019100709	240 x 250 x 64 mm
Upon request	Blue	05404019100716	240 x 250 x 64 mm
Upon request	White	05404019100723	240 x 250 x 64 mm
Upon request	Red	05404019100730	240 x 250 x 64 mm
Upon request	Purple	05404019100747	240 x 250 x 64 mm
Upon request	Petrol blue	05404019100754	240 x 250 x 64 mm



» Sterisystem® Dry-Base® Steri-ID instrument trays DIN 1/1

Article number	Tag colour	GTIN	Ext. dimensions
30012 00019	Green	05404019100761	480 x 250 x 64 mm
Upon request	Yellow	05404019100778	480 x 250 x 64 mm
Upon request	Black	05404019100785	480 x 250 x 64 mm
Upon request	Blue	05404019100792	480 x 250 x 64 mm
Upon request	White	05404019100808	480 x 250 x 64 mm
Upon request	Red	05404019100815	480 x 250 x 64 mm
Upon request	Purple	05404019100822	480 x 250 x 64 mm
Upon request	Petrol blue	05404019100839	480 x 250 x 64 mm

» Sterisystem® Dry-Base® Steri-ID instrument trays



» Replacement tags

Article number	Tag colour
30012 00009	Green
Upon request	Yellow
Upon request	Black
Upon request	Blue
Upon request	White
Upon request	Red
Upon request	Purple
Upon request	Petrol blue

CSSD Packing Tables



These height-adjustable packing tables have mainly been designed with people packing instrument sets in the central sterilisation unit in mind.

Our packing table allows your staff to work in an ergonomic fashion as the height can be adjusted to the type of task that needs to be performed and to people's anatomy and personal preferences. Thanks to the table's flexibility, staff can get on with their business in the most optimum working position.

The packing tables are shipped dismantled and should be assembled by your distributor's or your own technical staff.

The table's flexibility also means that workstations can be arranged to make the best possible use of the available space.



» Easily height adjustable

The height of the table can be set to anything between 765 mm and 1265 mm.

The height setting control comes with three different memory settings, allowing you to program a range of positions, which will prove very convenient if the same workstation is used by a number of people. The controls are located right underneath the worktop and are easy to reach.



» Flexibility

Aside from sockets, UTP and compressed air, the superstructure can also accommodate a range of accessories.

All CSSD Packing Tables come standard with 220V electrical supplies, if another type of electrical supply is required, this should be sourced locally.

Options and accessories marked with an * are intended for mounting during the production process, not afterwards.



» Worktop

The worktop is available in various sizes and finishes. Depending on the intended use, we can offer you a choice between stainless steel and HP laminate.

» CSSD Packing Tables - no upper structure fixture possible



» CSSD table with stainless steel worktop

Article Number	Dimensions worktop
17005 00086	1800 x 800 x 20 mm
17005 00088	1800 x 1000 x 20 mm
17005 00090	2000 x 800 x 20 mm
17005 00093	2000 x 1000 x 20 mm



» CSSD table with HP laminate worktop

Article Number	Dimensions worktop
17005 00192	1800 x 800 x 13 mm
17005 00194	1800 x 1000 x 13 mm
17005 00196	2000 x 800 x 13 mm
17005 00151	2000 x 1000 x 13 mm

» CSSD Packing Tables - suitable for upper structure components



» CSSD table stainless steel worktop for upper structure

Article Number	Dimensions worktop
17005 00082	1800 x 800 x 20 mm
17005 00084	1800 x 1000 x 20 mm
17005 00046	2000 x 800 x 20 mm
17005 00048	2000 x 1000 x 20 mm

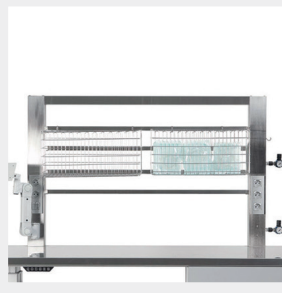


» CSSD table with HP laminate worktop for upper structure

Article Number	Dimensions worktop
17005 00158	1800 x 800 x 13 mm
17005 00165	1800 x 1000 x 13 mm
17005 00198	2000 x 800 x 13 mm
17005 00149	2000 x 1000 x 13 mm

Photos not binding. The new generation of packing tables has drawer units with surface-mounted handles.

» Accessories for all types of CSSD Packing Tables



» Upper structure for baskets and trays *

Article Number	Description	Ext. Dimensions
17005 00022	With LED-lamp	1420 x 920 mm
17005 00286	Without LED-lamp	1420 x 920 mm



» Upper structure for cutting device *

Article Number	Description	Ext. Dimensions
17005 00116	With LED-lamp	1420 x 920 mm
17005 00142	Without LED-lamp	1420 x 920 mm
17005 00095	Cutting device	Length 1200 mm



» Shelf for stock of laminate sacs *

Article Number	Maximum weight	Dimensions shelf
17005 00131	10 kg	400 x 1219 x 13 mm



» Sockets for upper structure *

Article Number	Description
17005 00023	3x socket
17005 00056	2x socket + switch (mounting always on the right-hand side)
17005 00057	2x socket + 2x UTP connection
17005 00058	1x Socket + 2x 2 UTP connections
17005 00160	1x socket + 2x UTP connection + switch (mounting always on the right-hand side)
17005 00148	Filling plate for electric sockets
17005 00190	Filling plate for electrical socket + switch (mounting always on the right-hand side)

Options and accessories marked with an * are intended for mounting during the production process, not afterwards.

» Upper structure components



» Stainless steel hook for the attachment of baskets

Article Number	Description
17005 00036	Oblique fixation of the wire basket
17005 00038	Straight fixation of the wire basket



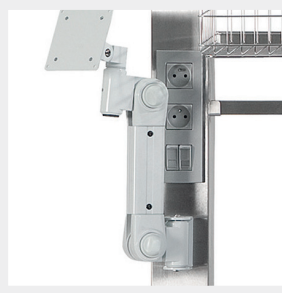
» Sorting basket for upper structure

Article Number	Ext. Dimensions
15007 00043	147 x 230 x 132 mm
15007 00042	210 x 350 x 145 mm
15007 00044	210 x 350 x 200 mm
17002 00023	Universal hook for the attachment of baskets to the upper structure



» Drawer unit including ABS modules with 3 drawers of 100 mm high

Article Number	Description	Filling	Ext. Dimensions
17005 00250	Pre-mounted *	3 ABS modules	652 x 478 x 406 mm
17005 00251	For mounting afterwards	3 ABS modules	652 x 478 x 406 mm



» Flex arm with VESA 100 connection for attachment of a screen *

Article Number
14009 00019



» Inspection lamp with magnifying glass *

Article Number	Dimensions of the lens	Dioptré
30001 00034	Ø 120 mm	5

Options and accessories marked with an * are intended for mounting during the production process, not afterwards.

» Upper structure components



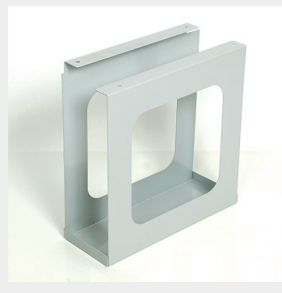
» Inspection lamp with magnifying glass and adjustable light *

Article Number	Description	Dimensions of the lens	Dioptré
30001 00033	-	162 x 105 mm	3
On demand	With LED lighting	Ø 153 mm	3,5



» Retractable drawer for Keyboard *

Article Number	Ext. Dimensions
17005 00167	480 x 305 mm



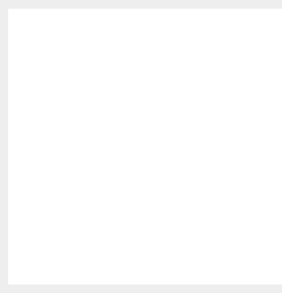
» Computerholder under table *

Article Number	Ext. Dimensions
17005 00070	184 x 495 x 498 mm



» Wheels for limited displacement i.f.o. floor cleaning

Article Number
On request



» Compressed air connection

Article Number	Description
17005 00024	Fitted in 1 column of the upper structure

Options and accessories marked with an * are intended for mounting during the production process, not afterwards.



Stackers for Sterisystem®

Perfo-Safe® wire baskets and shelves



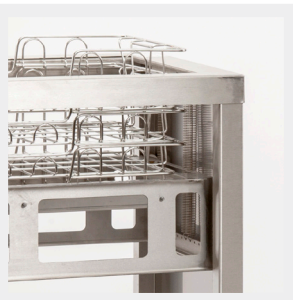
Made entirely of stainless steel, these spring-loaded trolleys are a real asset for your CSSD to help employees work more ergonomically.

Compared to storage on serving trolleys or in racks, you can gain a lot of space by storing Perfo-Safe® carriers in these stackers.

They are available for the ISO and DIN sizes of the Perfo-Safe® wire baskets and wire shelves.

Optionally, they can be equipped with a stainless steel push handle and wash tunnel-resistant wheels.

These high quality, stable and ergonomic stackers are a simple solution for the well-being and productivity of employees in the CSSD.



» Ergonomic functionality

Thanks to powerful springs tuned to the number and type of wire baskets or wire shelves in use, the baskets sink progressively downwards when loading. The same applies in the opposite direction when unloading. This allows CSSD employees to continuously work at ergonomic hip height (approx. 1 m).



» Highly manoeuvrable and compact

The stackers have a reduced footprint and fit perfectly alongside Belintra's height-adjustable packing tables.

Thanks to the stainless steel 4 swivel castors, 2 of which are fitted with brakes at the front, the stackers are easy to move. Optionally, they can be equipped with wash tunnel-resistant castors.



» Robust and sturdy

The stackers have additional reinforcement of the base, legs and spring bracket to ensure long-term functionality. The number of springs and carrying capacity are matched to the type of wire baskets or wire grids that will be used in the trolley.

In addition, the stackers also have 4 bumpers in polypropylene.

» Stackers for Sterisystem® Perfo-Safe® wire baskets and shelves



» Stackers for Sterisystem® Perfo-Safe® wire baskets and shelves

Article Number	Description	Ext. Dimensions*
18019 00001	Stacker for ISO wire baskets	800 x 559 x 993 mm
18019 00002	Stacker for DIN wire baskets	800 x 459 x 993 mm
18019 xxxxxx	Stacker for ISO wire shelves	750 x 550 x 904 mm
18019 xxxxxx	Stacker for DIN wire shelves	750 x 450 x 904 mm

* Push handle excl.



» Stainless steel push handle for stackers

Article Number	Description	Ext. Dimensions*
On request	Stainless steel push handle for ISO stackers	Ref. supplier: 90.5002
On request	Stainless steel push handle for ISO stackers	Ref. supplier: 90.5000

* Also available on request: 4 wash tunnel resistant wheels.
Please contact your Account Manager for more information.

» Capacity

» Stacker for ISO wire baskets (18019 00001)

Article Number	Dimensions	Number
30005 00002 (Anna)	600 x 400 x 100 mm	25 baskets
30005 00004 (Alice)	600 x 400 x 130 mm	30 baskets
30005 00036 (Ava)	600 x 400 x 150 mm	26 baskets

» Stacker for DIN wire baskets (18019 00002)

Article Number	Dimensions	Number
30005 00028 (Abba)	600 x 300 x 110 mm	12 baskets
30005 00026 (Aline)	600 x 300 x 165 mm	8 baskets
30005 00034 (Amy)	600 x 300 x 50 mm	51 baskets

» Stacker for ISO wire shelves (18019 xxxxxx)

Article Number	Dimensions	Number
30003 00004 (Doris)	600 x 400 x 11 mm	70 shelves
30003 00007 (Delphine)	600 x 400 x 45 mm	58 shelves

» Stacker for DIN wire shelves (18019 xxxxxx)

Article Number	Dimensions	Number
30003 00003 (Deborah)	600 x 300 x 11 mm	70 shelves

Sterisystem® Perfo-Safe® wire baskets

PATENTED



Our Sterisystem® highly polished stainless steel Perfo-Safe® wire baskets, which are available in ISO (400 x 600 mm) and DIN (300 x 600 mm) sizes, are a safe and hygienic means to transport and store sterile packs.

As a sterilisation, transport and storage component, these stainless steel Sterisystem Perfo-Safe® wire baskets will prove to be an invaluable tool in your instrument set sterilisation process. As a matter of fact they reduce the number of touchpoints of the packaged instrument sets to just one after sterilisation. This reduces the risk for tears, cuts and holes in the packaging material.

These Sterisystem® Perfo-Safe® wire baskets are an indispensable part of sterile storage and transport.

Sterisystem® Perfo-Safe® wire baskets are invaluable if you want to ensure that your sterile instruments sets are transported and stored safely. Our Sterisystem® Perfo-Safe® wire baskets form the basis of the CSSD/SPD basket-in-basket system which reduces the risk for perforations.



» More sets per sterilisation cycle

With the medium and high DIN baskets you save quite some space in the autoclave. This thanks to the gain in width on the one hand, and the possibility of stacking them on top of each other on the other hand*.

The patented® design - with cutaways in the sides - guarantees that the instrument tray can be lifted ergonomically out of the wire basket.



» Compatible UBeFlex® DIN runners for storage

The DIN baskets are stored on top of the DIN runners in the notch provided for this purpose. This DIN runner is also suitable for the DIN Perfo-Safe® wire shelf.

This allows you to combine DIN wire baskets with DIN wire shelves according to your needs.



» Save space in transport

You can position two DIN baskets in the "W" (wide) direction after each other in the Belintra open or closed Stericarts. By doing so you can double the number of sets per level.



» Stackable* and nestable

Without the addition of extra handles, the baskets are not only stackable*, they are also nestable, making them more user-friendly and safer (no fear of fingers getting jammed).

By nesting the baskets which are not in use, you save costly space.



» Outstanding quality

The baskets have been manufactured in accordance with the most stringent quality standards. Baskets with welding burrs, gaps, wire distortions or discolourations in the welding work never see the light of day. Our baskets are devoid of any sharp edges or welding burrs which could cause tears in packaging.

For hygiene purposes, the upper edge features one single wire only instead of two.



» Increased patient safety

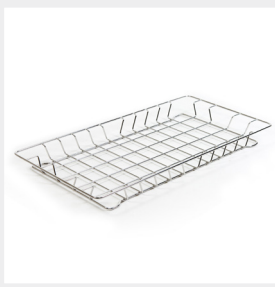
These Sterisystem Perfo-Safe® wire baskets are ideal if you wish to follow the basket-in-basket system to sterilise, transport and store your packaged Sterisystem Dry-Base® instrument trays. As the packaged instrument tray is stored in a wire basket, direct contact with the sterile instrument set is avoided.

» Sterisystem® Perfo-Safe® wire baskets



» Sterisystem® Perfo-Safe® Ergo-Stack wire baskets - DIN

Article Number	Name	GTIN	Ext. Dimensions
30005 00028	Abba	05404019100846	600 x 300 x 110 mm
30005 00026	Aline	05404019100853	600 x 300 x 165 mm



» Sterisystem® Perfo-Safe® wire basket - DIN

Article Number	Name	GTIN	Ext. Dimensions
30005 00001	Cindy*	05404019100907	600 x 300 x 50 mm
30005 00034	Amy	05404019102291	600 x 300 x 50 mm

* Only for use in UFlex 3 racks, not compatible with UBeFlex® racks.



» Sterisystem® Perfo-Safe® wire baskets - ISO

Article Number	Name	GTIN	Ext. Dimensions
30005 00002	Anna	05404019100860	600 x 400 x 100 mm
30005 00004	Alice	05404019100877	600 x 400 x 130 mm
30005 00036	Ava	05404019103069	600 x 400 x 150 mm
30005 00018	Amanda	05404019100884	400 x 300 x 100 mm
Upon request	Annetta	05404019100891	600 x 400 x 200 mm



Sterisystem® Perfo-Safe® wire shelves



Our Sterisystem® highly polished Perfo-Safe® wire shelves are the perfect solution if you need to sterilise, transport and store diverse sterilisation packs. They are available in standard sizes : DIN (300 x 600 mm), ISO (400 x 600 mm) and for larger sterilisation packs in double DIN (600 x 600 mm).

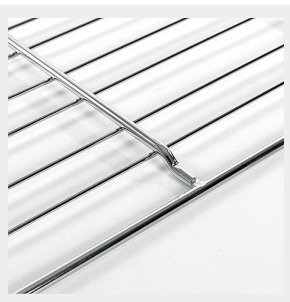
Manufactured in accordance with the highest quality standards and finished to perfection, these wire trays meet the most stringent CSSD and OR requirements because the number of touchpoints of wrapped instrument trays is reduced to just one after sterilisation. This decreases the risk for tears, cuts and holes of the wrapping. These Sterisystem® Perfo-Safe® wire shelves are an indispensable part of sterile storage and transport.

Sterisystem® Perfo-Safe® wire shelves are an essential item if you wish to transport and store bulkier diverse sterilisation packs.



» Handles

The Sterisystem® Perfo-Safe® wire shelves have been fitted with 2 handles that have been seamlessly incorporated into the outer edge. These handles ensure that the wire trays are easy and ergonomic to manipulate.



» Welds

The Sterisystem® Perfo-Safe® wire shelves have been designed in such a way that any welds have been kept to an absolute minimum. They have been manufactured in accordance with the most stringent quality standards. Wire trays with welding burrs, gaps, wire distortions or discolourations in the welding work are not allowed.



» Rounded structure

Our Sterisystem® Perfo-Safe® wire shelves are devoid of any sharp edges or welding burrs that could cause tears, cuts and holes in packaging.

» Sterisystem® Perfo-Safe® wire shelves



» Sterisystem® Perfo-Safe® wire shelves

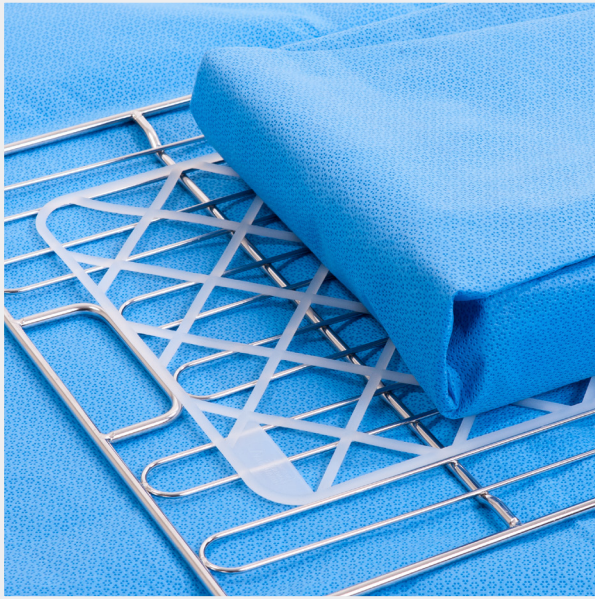
Article Number	Name	GTIN	Ext. Dimensions
30003 00003	Deborah	05404019100914	600 x 300 x 11 mm
30003 00004	Doris	05404019100921	600 x 400 x 11 mm
30003 00005	Dorothe	05404019100938	600 x 600 x 11 mm
19031 00031*	XW	-	600 x 950 x 11 mm



» Sterisystem® Perfo-Safe® wire shelf with raised edge

Article Number	Name	GTIN	Ext. Dimensions
30003 00007	Delphine	05404019100945	600 x 400 x 45 mm
30003 00012	Demi	05404019103052	300 x 400 x 45 mm

Silicon mat

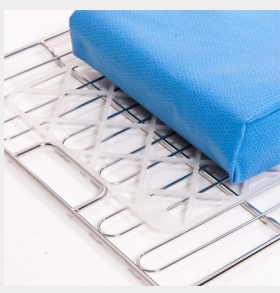


The silicon mat is mainly used in the central sterilization department and is placed between the packaged instrument basket and the wire tray or wire basket.

Due to its excellent non-slip properties, the packaged instrument basket remains in place and does not move.

In combination with the Sterisystem® Perfo-Safe® wire shelves and baskets, the silicon mats are an indispensable part of sterile storage and transport.

The material of which the silicon mat is made is resistant to wear and to chemicals and bacteria, which makes it perfectly suitable for repeated use within the central sterilisation department.



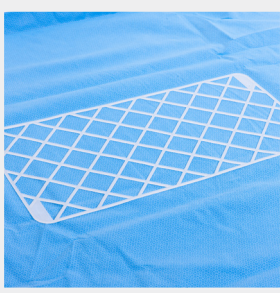
» Anti-slip function

Since the packaged instrument basket does not move during transportation, any damage or perforation that could occur to the packaging material is avoided, guaranteeing sterility requirements within central sterilization department.



» Silicon

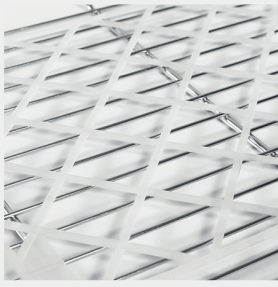
The material which the silicone mat is made from complies with requirements of the European Directive 2002/72/EC relating to plastic materials and articles intended to come into contact with foodstuffs, and is temperature resistant from -40 °C to 200 °C. This material is resistant to wear and to chemicals and bacteria, and corresponds to the highest degree of fire safety. Therefore, it is perfectly suitable for repeated use within the central sterilization department.



» Specific design

Its specific design ensures uniform heat distribution and perfect permeability of the steam within the autoclave. The standard colour is white. The thin version is appropriate for internal transportation, whereas the "heavy duty" 6 mm thick version is suitable for external transportation.

» Silicon mat



» Silicon mat for Sterisystem® Perfo-Safe® wire baskets and wire shelves

Article Number	Description	Thickness	GTIN	Ext. Dimensions
30010 00004	Standard	3 mm	05404019100952	540 x 280 mm
30010 00006	Heavy duty	6 mm	05404019100969	600 x 324 mm

Sterisystem® open Stericart - 18006 series

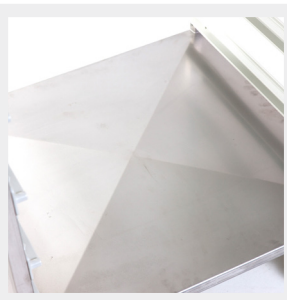


The Sterisystem® open Stericart in stainless steel is designed for indoor transport of both instrument sets and consumables between the sterile processing department and the operating theatre.

This modular open transport cart comes both in an ISO size (600 x 400 mm) and in a double DIN size (600 x 600 mm). When using the double DIN version, the capacity per level is doubled if the establishment uses DIN transport baskets or trays.

The standard height of 1500 mm allows the user to see over the top of the cart during transport.

Sterisystem® open Stericarts are washing tunnel-proof, due to the high quality materials and the wheels which have been tested for resistance to washing tunnels.



» Hygiene

Underneath, the Sterisystem® open Stericarts are fitted with a base plate which slopes from the middle. This protects the transported goods against splashes of moisture or dirt.

This X-baseplate also ensures that no water remains behind during the washing and drying process.



» Washing tunnel-proof

The choice of high-quality, non-corrosive materials and components means that the Sterisystem® open Stericart can be cleaned in a washing tunnel.

Both the AISI 304 stainless steel body and the polyamide runners and wheels have been tested for resistance to washing tunnels.



» Unique handles

The characteristic yellow Belintra handles do not get as hot as stainless steel during washing, so the Sterisystem® open Stericart user can safely hold on to them at the end of the process.

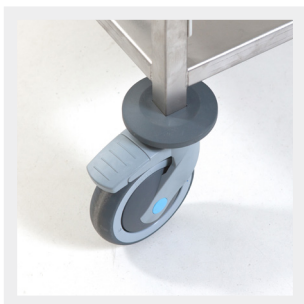
The dual handles are installed vertically on either side so that they can be used ergonomically by both short and taller users.



» Noise-absorbing runners

The runners are made of plastic. Unlike stainless steel runners, the high quality plastic ensures smooth running and substantial noise reduction when sliding stainless steel transport baskets or trays or plastic modules in and out. The polyamide also absorbs noise during transport.

The runners have a built-in stop function at both ends. Every Sterisystem® open Stericart is fitted with 10 pairs of runners which results in 9 usable positions.



» User-friendly

Due to the functional height of 1500 mm, employees can still see over the top of the transport cart when moving forward. The high manoeuvrability of the wheels guarantees easy handling.

The open sides facilitate access on both sides, which certainly is an advantage in case of double storage per level.

» Versatile Modularity Tailored to Your Workflow

Tailor your cart to match your unique workflow and standards with our diverse range of open transport carts. Each model offers distinct modular features to optimize efficiency. Our modular open transport carts cater to the specific needs of your CSSD, providing adaptability without compromising efficiency.

Double DIN : Maximizing Capacity

The Double DIN (600 x 600) model allows the insertion of two DIN transport baskets or shelves side by side on each level. This innovative design effectively doubles the capacity per level, accommodating up to 18 DIN sets. Additionally, the cart supports the use of 600 x 600 transport shelves, ISO transport baskets and shelves, as well as ISO PC and ABS modules for consumables.

ISO D-Type : Precision for ISO-Compatible Elements

Ideal for ISO-compatible elements, the ISO D-type model is optimized for ISO transport baskets and shelves, along with ISO PC and ABS modules for consumables. It excels in maintaining the integrity of ISO standards, though it does not support the insertion of DIN components.

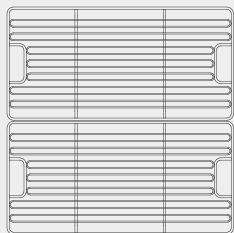
ISO W-Type : A Blend of Flexibility

The ISO W-type model combines flexibility and adaptability. While it allows the insertion of DIN transport baskets or shelves (limited to one per level), it remains optimal for all ISO-compatible elements, including ISO transport baskets and shelves, as well as ISO PC and ABS modules for consumables.

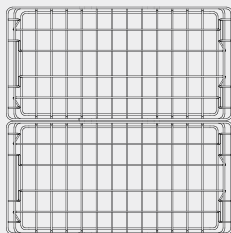
2 x DIN : Doubling Efficiency

Like the Double DIN, the 2 x DIN version permits the insertion of two DIN transport baskets or shelves on each level in two separate columns, effectively doubling the capacity to accommodate up to 18 DIN sets. However, it's important to note that this model is not suitable for any ISO components.

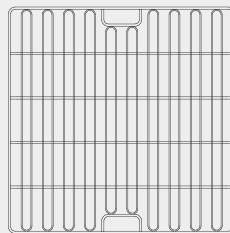
» Possible filling per pair of runners (Double DIN)



2 x DIN wire shelves
600 x 300 mm
or
1 x ISO wire shelf
600 x 400 mm



2 x DIN wire baskets
600 x 300 mm
or
1 x ISO wire basket
600 x 400 mm



1 x double DIN wire shelf
600 x 600 mm



**1 x PC or ABS module
or basket**
600 x 400 mm

» Sterisystem® open Stericart - 18006 series



» Sterisystem® open Stericart - Double DIN

Article number	Runners	Ext. Dimensions
18006 00070	10 pair of fixed runners - 9 positions usable	792 x 715 x 1571 mm



» Sterisystem® open Stericart - ISO D-type

Article number	Runners	Ext. Dimensions
18006 00074	10 pair of fixed runners - 9 positions usable	590 x 715 x 1571 mm



» Sterisystem® open Stericart - ISO W-type

Article number	Runners	Ext. Dimensions
18006 00071	10 pair of fixed runners - 9 positions usable	792 x 515 x 1571 mm



» Sterisystem® open Stericart - 2 x DIN

Article number	Runners	Ext. Dimensions
18006 00092	2 x 10 pair of adjustable runners - 2 x 9 positions usable	819 x 688 x 1658 mm



» Sterisystem® open Stericart - 2 x DIN + shelf

Article number	Runners	Ext. Dimensions
18006 00097	10 pair of adjustable runners - 9 positions usable	819 x 688 x 1658 mm

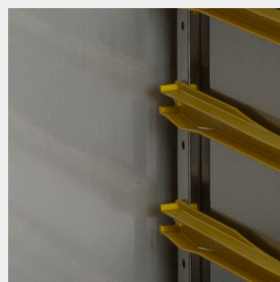
Sterisystem® closed Stericart



Our Sterisystem® closed, washing-tunnel-resistant stainless steel Stericarts are manufactured based on the double DIN standard dimensions of 300 x 600 mm, with the idea of being able to use 2 DIN positions one after the other. The 50 mm extra depth at the back means that this transport cart can also be used for sterile transport of slightly longer sets. These Belintra Sterisystem® closed Stericarts are characterized by yellow runners, plastic bumpers, handlebars and latch.

The low model (1100 mm) can double as a sterile field in the operating theatre. This case cart is a universal space-saving transport device. It is suitable for 2 DIN wire baskets or shelves or 1 ISO wire basket or shelf per level. The new "Extra-Wide" model can serve to transport packages up to 950 x 600 mm.

The Sterisystem® washing-tunnel-resistant and shock-resistant closed Stericarts with their unique space-saving design are perfect for safely transporting sterile instruments from and to the operating theatre and contaminated sets to the sterilizing unit.



» Wash tunnel resistant

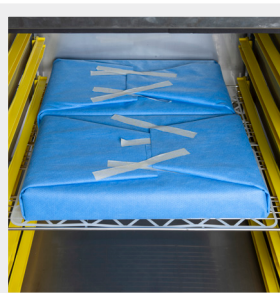
The Sterisystem® closed case carts are designed in such a way to prevent any residual moisture after drying. The synthetic runners are also wash tunnel resistant*. Unlike stainless steel runners, the high quality plastic ensures smooth running and substantial noise reduction when sliding stainless steel transport baskets or trays or plastic modules in and out. Moreover, the synthetic runners protect wrapped instrument trays against perforations and absorb noise during transport.



» Ergonomic

The doors of these stainless steel transport carts swivel open to 270° and click onto the side walls with magnets when in the open position. This ensures that the cart is easy to access.

The high model still allows the user to see over the top of the cart during transport. The low model can also be used as a case cart with a sterile field in the operating theatre.

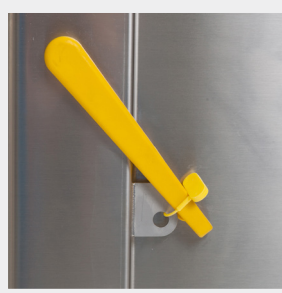


» Optimum loading and space-saving

The high case carts are equipped with 9 pairs of runners and the low case carts with 6 pairs. Thanks to the high number of positions, the loading is optimised without losing out on space.

Transporting the instruments on DIN Perfo-Safe® wire shelves or in DIN Perfo-Safe® wire baskets allows you to double the capacity per level.

* Drying instructions: 8 minutes at 85°C in dry air. Dry air is air with a relative humidity of maximum 60% at an ambient temperature of 21°C. Converted this is a relative humidity of maximum 1,1% at 85°C.



» Safety

The cart can be sealed at the front with a breakable seal, to guarantee sterility from the sterilization unit to the operating theatre and also avoid contamination during the transport back.

It is recommended that the packed instrument baskets are placed on silicone anti-slip mats to prevent movement during transport and to reduce noise levels.



» Identification

The closed Stericarts feature a document holder on the side (A4) as standard to ensure that the carts and their contents can be identified from the outside.



» Castors

The transport carts are equipped with four double Tente® swivel castors with a diameter of 125 mm. Both wheels on the front have a brake and directional lock. The castors are equipped with a wheel hub on stainless steel bearings.

The carts are equipped with four bumpers to prevent damage to doors and walls.



» Cart washer resistant magnets

The Sterisystem® stainless steel transport cart is equipped with 4 sets (2 sets per door) of cart washer resistant neodymium magnets which are embedded in a silicone housing. Neodymium magnets are the strongest magnet on earth.

The design of the silicone housing allows for a perfect alignment of the magnets resulting in optimal connection power between the magnets and guaranteeing that the doors will remain open during the cleaning process in the cart washer.



» Handlebars

The low Sterisystem® transport carts are equipped with 1 horizontal yellow handlebar along each side, whereas the high carts are equipped with 2 vertical handlebars on each side to ensure smooth manoeuvrability.





» Status display

These transport trolleys are equipped with a status display where “green” indicates that the trolley contains clean, sterile goods. “Red” indicates that the cart is returning after use in the O.R.

Drying instructions: 8 minutes at 85°C in dry air. Dry air is air with a relative humidity of maximum 60% at an ambient temperature of 21°C. Converted this is a relative humidity of maximum 1,1% at 85°C.

» Sterisystem® closed Stericarts



» Sterisystem® closed Stericart - Low - Double DIN

Article number	Runners	Weight	Ext. Dimensions
19031 00039	1 column with 6 double DIN-type positions (600 x 600 mm)	58 kg	736 x 736 x 1100 mm



» Sterisystem® closed Stericart - High - Double DIN

Article number	Runners	Weight	Ext. Dimensions
19031 00038	1 column with 9 double DIN-type positions (600 x 600 mm)	78 kg	736 x 736 x 1600 mm



» Sterisystem® closed Stericart - XW

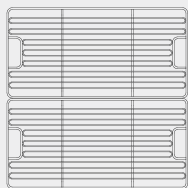
Article number	Columns	Weight	Ext. Dimensions
19031 00042	1 column with 5 ISO W-type positions 1 column with 4 DIN-type positions for 300 x 600 mm shelves 1 column with 4 positions for 950 mm wide shelves	95 kg	1084 x 736 x 1600 mm



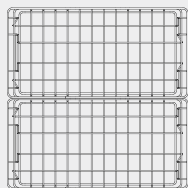
» Sterisystem® closed Stericart - 2 x DIN

Article number	Columns	Weight	Ext. Dimensions
19031 00044	2 columns with 6 DIN-type positions (600 x 300 mm) 1 column with 2 positions for wire shelf Dina (650 x 600 mm) Art. n° 19031 00047	82 kg	786 x 736 x 1600 mm

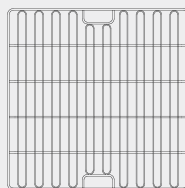
» Carriers for use in the closed transport trolleys



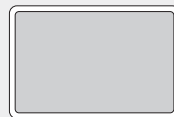
2 x DIN wire shelves
600 x 300 mm
or
1 x ISO wire shelf
600 x 400 mm



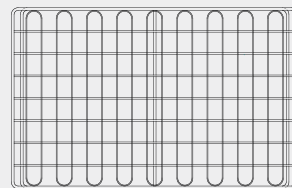
2 x DIN wire baskets
600 x 300 mm
or
1 x ISO wire basket
600 x 400 mm



1 x double DIN wire shelf
600 x 600 mm

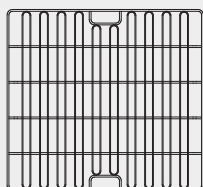


1 x PC or ABS module or basket
600 x 400 mm



XW wire shelf
950 x 600 mm

Only for use in the top compartment of the Sterisystem® closed stainless steel case cart (19031 00042)



1 x Dina wire shelf
650 x 600 mm



Closed aluminum transport carts



These modular trolleys in anodised aluminum are produced according to ISO and DIN measurements. The nylon guides, on which stainless steel as well as PC, ABS or polypropylene baskets or modules can rest, guarantee a smooth and noiseless transport. The distance between the guides is 114 mm as standard.

Equipped with an extra bumper at the top of the trolley and using a lock, the aluminum transport trolley is a safe and ergonomic means of internal transport of sterile and non-sterile goods.

This transport cart is best cleaned manually. The use of aluminum trolleys in washing tunnels is not recommended, as the material will tarnish. For a washing tunnel resistant trolley, we recommend our range of stainless steel trolleys.

Our closed ISO aluminum transport carts allow you to safely and hygienically transport sterile and non-sterile goods or medication from your storage, sterilization unit or pharmacy to the relevant delivery points.



» Tow bar mechanism

The base of the aluminum carts can be fitted with a tow bar to allow you to couple several carts together so that they can be operated as one single unit.

For enhanced manoeuvrability, both sides of the cart have been fitted with a push bar.



» Removable ladders

If necessary, the ladders with the guides can be dismantled to allow for easy cleaning of the trolley.

The standard distance between the runners is 114 mm.



» Castors

The transport carts are delivered with 200 mm diameter castors. These make for low rolling resistance and ensure that the transport cart is easy to manoeuvre.

Our 1-column, D-type transport carts have been fitted with smaller castors of 125 mm in diameter.

» Closed aluminium transport carts - Overview

Basic version	19032 00001	19032 00002	19032 00003	19032 00004	19032 00005	19032 00006	19032 00007	19032 00008	19032 00009
All models inclusive of cylinder lock with key set, A4 document holder and brake on the swivel wheel									
Number of columns	ISO 1	ISO 1	ISO 2	ISO 2	ISO 3	ISO 3	DIN 2	ISO 3	ISO 2
Number of runners	12 pair	9 pair	2 x 12 pair	2 x 9 pair	3 x 12 pair	3 x 9 pair	2 x 9 pair	3 x 6 pair	2 x 6 pair
Usable positions (B = Baskets, S = Shelves)	12B 11S	9B 8S	2 x 12B 2 x 11S	2 x 9B 2 x 9S	3 x 12B 3 x 11S	3 x 9B 3 x 9S	2 x 9S	3 x 6B 3 x 6S	2 x 6B 2 x 6S
Document holder	✓	✓	✓	✓	✓	✓	✓	✓	✓
Drawbar	-	-	-	-	-	-	-	-	-
Model	High	Low	High	Low	High	Low	Low	Low	Low
Height in mm	1665	1500	1750	1500	1750	1500	1500	1500	1500
Diameter wheels in mm	125	125	200	200	200	200	200	200	200
Load capacity	25 kg per pair of runners - 150 kg per column - 300 kg per cart								
Filling									
ISO Perfo-Safe® wire shelves	✓	✓	✓	✓	✓	✓	-	✓	✓
ISO Perfo-Safe® wire baskets	✓	✓	✓	✓	✓	✓	-	✓	✓
ISO Perfo-Safe® wire shelf with raised edge (Delphine)	✓	✓	✓	✓	✓	✓	-	✓	✓
DIN Perfo-Safe® wire shelves	-	-	-	-	-	-	✓	-	-

Full option version	19032 00010	19032 00011	19032 00012	19032 00013	19032 00014	19032 00015	19032 00016	19032 00017	19032 00018
All models inclusive of cylinder lock with key set, A4 document holder and brake on the swivel wheel, rubber bumper at the top, tow bar and coupling hook									
Number of columns	ISO 1	ISO 1	ISO 2	ISO 2	ISO 3	ISO 3	DIN 2	ISO 3	ISO 2
Number of runners	12 pair	9 pair	2 x 12 pair	2 x 9 pair	3 x 12 pair	3 x 9 pair	2 x 9 pair	3 x 6 pair	2 x 6 pair
Usable positions (B = Baskets, S = Shelves)	12B 11S	9B 8S	2 x 12B 2 x 11S	2 x 9B 2 x 9S	3 x 12B 3 x 11S	3 x 9B 3 x 9S	2 x 9S	3 x 6B 3 x 6S	2 x 6B 2 x 6S
Document holder	✓	✓	✓	✓	✓	✓	✓	✓	✓
Drawbar	✓	✓	✓	✓	✓	✓	✓	✓	✓
Model	High	Low	High	Low	High	Low	Low	Low	Low
Height in mm	1665	1500	1750	1500	1750	1500	1500	1500	1500
Diameter wheels in mm	125	125	200	200	200	200	200	200	200
Load capacity	25 kg per pair of runners - 150 kg per column - 300 kg per cart								
Filling									
ISO Perfo-Safe® wire shelves	✓	✓	✓	✓	✓	✓	-	✓	✓
ISO Perfo-Safe® wire baskets	✓	✓	✓	✓	✓	✓	-	✓	✓
ISO Perfo-Safe® wire shelf with raised edge (Delphine)	✓	✓	✓	✓	✓	✓	-	✓	✓
DIN Perfo-Safe® wire shelves	-	-	-	-	-	-	✓	-	-

Closed ISO stainless steel transport carts



Our closed, washing-tunnel-resistant stainless steel transport carts are manufactured based on the ISO standard dimensions of 600 x 400 mm.

The carts are fitted with a lock with breakable seal, bumpers on the bottom, top and back, and identification holders on the front and sides.

This cart is ideal for transporting sterile sets from the external sterilization unit to the operating theatre. Used sets can also be transported from the hospital to the sterilization unit.

These ISO stainless steel washing-tunnel-resistant and shock-resistant transport carts are perfect for safely transporting sterile instruments from and to the operating theatre and contaminated sets to the sterilizing unit.



» Hygienic

The transport cart is washing-tunnel-resistant. The runners can be removed from the cart for optimum cleaning.

The base plate and top plate are sloped to prevent any residual moisture after drying.



» Door fixation

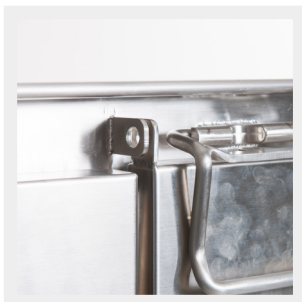
The doors of these stainless steel transport carts swivel open to 270° and are locked in the open position by a catch underneath the bumper. This ensures that the doors remain fixed in open position during the washing process.

The height (1500 mm) allows the user to see over the top of the cart during transport.



» Optimal loading

The carts are equipped guides for each ISO column. These provide 9 useful positions depending on whether the instrument sets are being transported with ISO Perfo-Safe® wire shelves, wire baskets or wire shelves with raised edge (see comparative table).



» Safety

The carts can be sealed at the top with a breakable seal, to guarantee sterility from the sterilization unit to the operating theatre and also avoid contamination during the transport back.

It is recommended that the packed instrument baskets are placed on silicone anti-slip mats to prevent movement during external transport and to reduce noise levels.



» Identification

The transport carts feature a document holder on the front (A4) and side (A5) as standard to ensure that the carts and their contents can be identified from the outside.



» Castors

The transport carts are equipped with two swivel castors with a brake (left front and back) and two fixed castors (right front and back). The ISO 1 transport carts have a wheel diameter of 125 mm, while the ISO 2 transport carts have a wheel diameter of 160 mm. Optionally, the cart can be equipped with directional fixation. This is a handy and ergonomic solution when logistics employees travel longer distances with **individual trolleys**. When connecting several carts in a train form, the combination of 2 fixed wheels and 2 swivel wheels is still a requirement.



» Drawbar

A number of standard configurations of the stainless steel transport carts are equipped with a drawbar that can be used to couple several transport carts together to form a 'train' (see comparative table).



» Status display

On request, transport trolleys can be equipped with a status display where "green" indicates that the trolley contains clean, sterile goods. "Red" indicates that the cart is returning after use in the O.R.

Model 19016 00115 is standard equipped with this status display.

» Closed ISO stainless steel transport carts - Overview

Article number	19016 00070	19016 00071	19016 00078	19016 00079
Number of columns	ISO 1	ISO 2	ISO 1	ISO 2
Number of runners	10 pair	2 x 10 pair	10 pair	2 x 10 pair
Usable positions	9	18	9	18
Document holder	✓	✓	✓	✓
Drawbar	-	-	✓	✓
Model	Low	Low	Low	Low
Height in mm	1422	1470	1422	1470
Diameter wheels in mm	125	160	125	160
Filling				
ISO Perfo-Safe® wire shelves	✓	✓	✓	✓
ISO Perfo-Safe® wire baskets	✓	✓	✓	✓
ISO Perfo-Safe® wire shelf with raised edge (Delphine)	-	-	-	-

Article number	19016 00076	19016 00077	19016 00080	19016 00081
Number of columns	ISO 1	ISO 2	ISO 1	ISO 2
Number of runners	9 pair	2 x 9 pair	9 pair	2 x 9 pair
Usable positions	9	18	9	18
Document holder	✓	✓	✓	✓
Drawbar	-	-	✓	✓
Model	Low	Low	Low	Low
Height in mm	1422	1470	1422	1470
Diameter wheels in mm	125	160	125	160
Filling				
ISO Perfo-Safe® wire shelves	✓	✓	✓	✓
ISO Perfo-Safe® wire baskets	-	-	-	-
ISO Perfo-Safe® wire shelf with raised edge (Delphine)	✓	✓	✓	✓

» Closed ISO stainless steel transport carts - Overview



Article number	19016 00115 - transport cart with shelf*
Number of shelves	1
Number of columns	ISO 2
Usable positions	7
Document holder	✓
Drawbar	-
Model	Low
Height in mm	1500
Diameter wheels in mm	160
Filling	
ISO Perfo-Safe® wire shelves	7
ISO Perfo-Safe® wire baskets	7
ISO Perfo-Safe® wire shelf with raised edge (Delphine)	6-7

* Standard equipped with status display

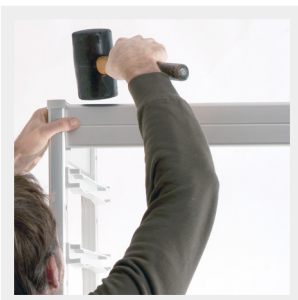
UBeFlex® storage system



The UBeFlex® modular storage system was developed with very quick assembly, functionality, durability and stability in mind. The result is a unique storage system made from anodized aluminum and other high-quality, anti-static synthetic materials, which means it can be used in both sterile storage and non-sterile environments.

Thanks to the modular construction in DIN D-type, ISO D-type or ISO W-type columns, which may or may not be combined with shelves, it can be used in various departments of the healthcare institution, from CSA through pharmacy to kitchen and cold storage. Because of the unique design, it is an ergonomic and hygienic storage solution and can also be used as a "pass-through" rack.

With its revolutionary design, the new UBeFlex® storage system is very quickly assembled and is extremely flexible for optimum use of the available space.



» Easy mounting and cleaning

The columns, connection and connection sets, runners and shelves can be assembled quickly and easily without extra tools.

The UBeFlex® storage system can easily be cleaned and disinfected.



» Very modular with columns and shelving

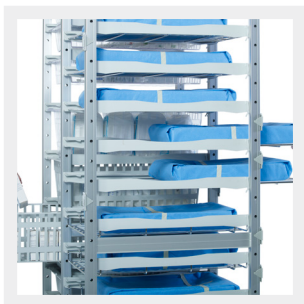
UBeFlex® gives extensive possibilities for modular set-ups. With columns "Deep" or "Wide" 60 x 40 cm or DIN 60 x 30 cm in combination with shelves varying between 30 and 180 cm (30, 60, 90, 120, 150 or 180 cm) you can make optimum use of the available space.

For the shelving in D-type you can choose between full shelves in synthetic materials or open shelves in chromed steel. The open shelves can be fitted with dividers.



» Extremely strong

In column set-up, UBeFlex® has a load capacity of 25 kg per pair of runners and in shelf set-up max. 15 kg per shelf element. For details, see technical data sheet.



» Pass-through set-up

Because of the unique design, in which no reinforcement is required on the back, the UBeFlex® can also be used in a “pass-through” set-up and is thus accessible from both sides.

In case you want a back protection on the shelving, you can use additional shelving profiles to use as a closing profile to avoid packages sliding through.



» Stationary and movable versions

The UBeFlex® columns are available in a stationary version with 26 usable runner positions per column and a movable version with 24 usable runner positions per column. Unused positions can be covered with plastic caps.

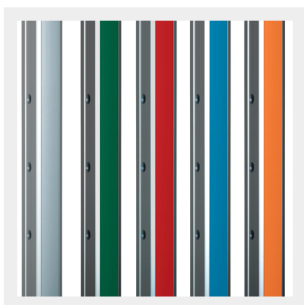
The stationary version has height-adjustable feet to compensate for imperfections of the floor. The movable version is fitted with small wheels (Ø 50 mm), so that it can be moved for floor cleaning.



» Optimum labeling

The shelves can be fitted with newly designed “click” label holders. These simply click onto any position on the front of the shelf and can be fitted with an insert. Because these label holders do not protrude above the edge of the shelf, you can take larger packets or containers from the shelves without a hitch.

There are specific label holders for the columns that can also simply be clicked onto the profiles. All versions can be found further back.



» Identification

As an option you can fit the UBeFlex® with coloured PVC strips (packs of 10) to replace the standard grey profiles to personalize your storage per department or, for example, to use colour coding for location allocation per discipline in the storage within your CSSD.

» New “Click” runners

Unique design of the plastic runners for easy assembly and quick movement if necessary. The runners come in packs of 10 pairs.



1. Position the runners in the required spot. Make sure that both pins have been inserted properly.



2. Push the runner against the upright and click the lip securely into place.



3. Make sure that the lip clicks properly over the edge of the upright.

» A set-up example

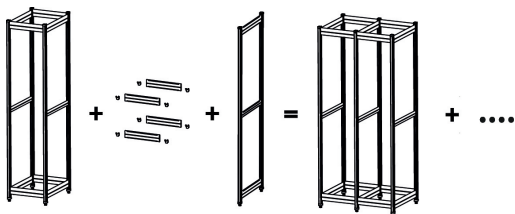
A UBeFlex® modular storage system module consists of 2 posts and a connection set. A connection set comprises of 4 connecting elements that interconnect the posts. To expand on this configuration you will need an extra post and connection set. Option wise, the sky is the limit.



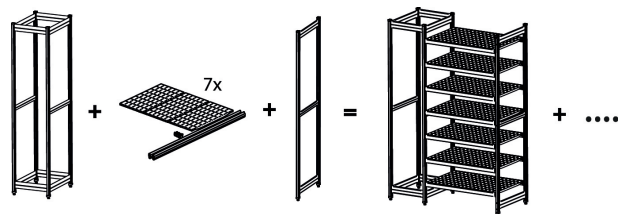
» Combining columns of equal depth

Columns of equal depth can be combined ad infinitum. You can also interconnect columns of different widths. For the exact measurements, please refer to the next page.

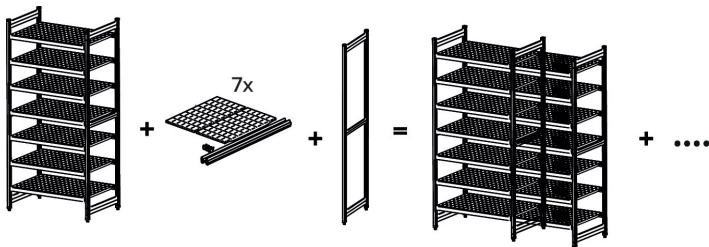
» Example of a setup with runners



» Example of a setup with runners and shelves



» Example of a setup with shelves



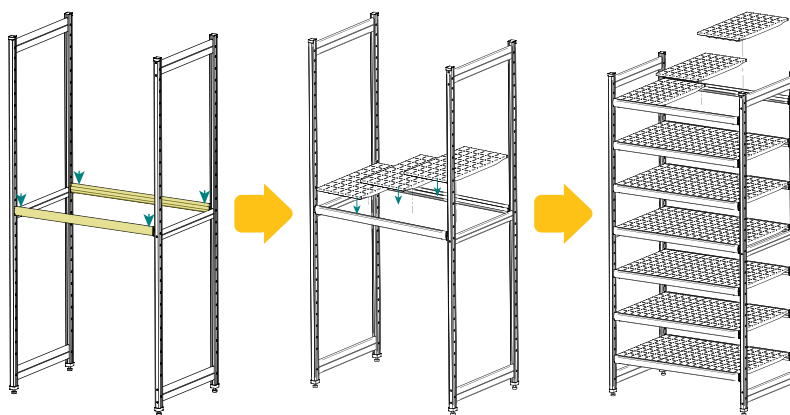
In certain configurations, **spacer lockers** and **back reinforcement** are required. Be sure to ask your seller about this.

- The spacer lockers are included with the mobile posts, for the stationary posts these should be ordered separately if required.
- Back reinforcement is always required for configurations smaller than 3 columns and for some "heavy duty" applications.

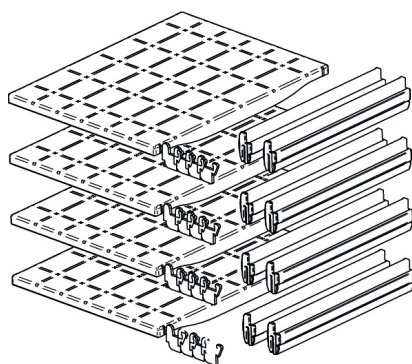
» UBeFlex® Shelf Sets

Every shelf of the UBeFlex® storage system consists of 2 profiles on which the boards are positioned. The entity forms the shelf on which goods can be placed.

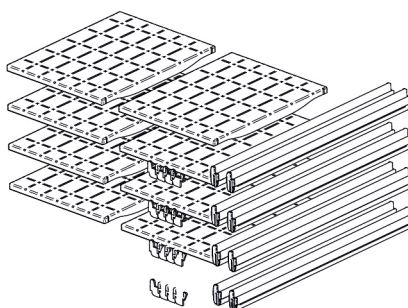
Depending on the width of the shelf multiple boards and profiles of different lengths are required.



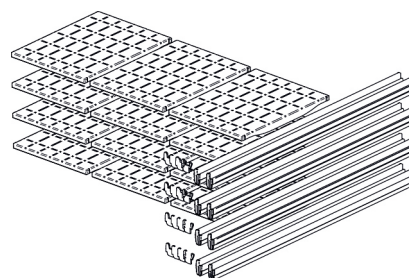
» W-type shelf sets (400 mm depth)



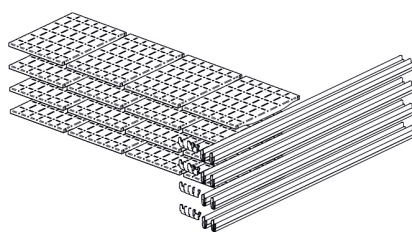
» Set 300 x 400 (WxD)	
Article number	16010 00049
Boards per set	1
Sets per box	4



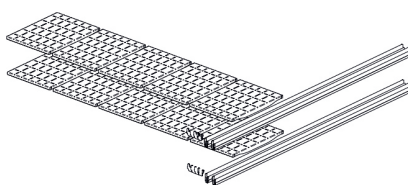
» Set 600 x 400 (WxD)	
Article number	16010 00050
Boards per set	2
Sets per box	4



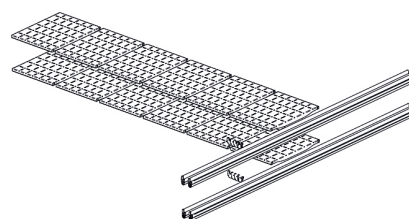
» Set 900 x 400 (WxD)	
Article number	16010 00051
Boards per set	3
Sets per box	4



» Set 1200 x 400 (WxD)	
Article number	16010 00052
Boards per set	4
Sets per box	4



» Set 1500 x 400 (WxD)	
Article number	16010 00053
Boards per set	5
Sets per box	2



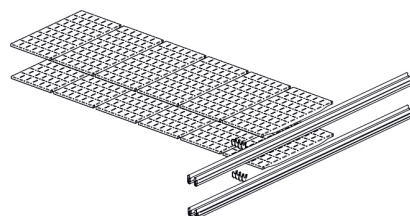
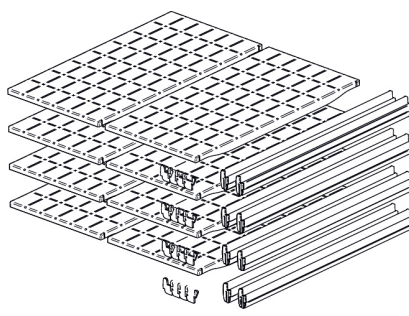
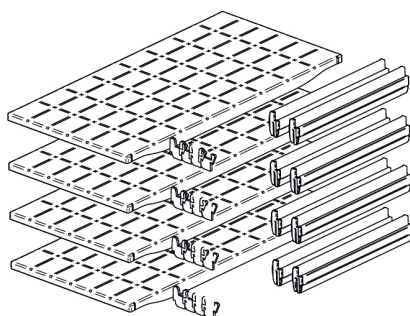
» Set 1800* x 400 (WxD)	
Article number	16010 00054
Boards per set	6
Sets per box	2

We are currently in a transition phase in which these assembled sets will eventually be replaced by loose shelves in combination with a set of profiles of the desired length. You will always find the final composition on the order confirmation.

* The 1800 mm shelves cannot be used in the mobile version.



» D-type shelf sets (600 mm depth)



» Set 300 x 600 (WxD)

Article number	16010 00043
Boards per set	1
Sets per box	4

» Set 600 x 600 (WxD)

Article number	16010 00044
Boards per set	2
Sets per box	4

» Set 1800* x 600 (WxD)

Article number	16010 00048
Boards per set	6
Sets per box	2

We are currently in a transition phase in which these assembled sets will eventually be replaced by loose shelves in combination with a set of profiles of the desired length. You will always find the final composition on the order confirmation.

* The 1800 mm shelves cannot be used in the mobile version.

» Calculating the installation

By using the measures below you can calculate what the total width of your installation will be. You start with a **“Column”** which you then complete with one or more units **“Extension”**. ISO D-type and ISO DIN-type columns can be combined. Mixed installations with runners and shelves are also possible, as long as they have the same depth (D-type or W-type).

» Setup with runners

Type	Stationary	Movable (max. 5 columns coupled)
ISO D-type - Column	482 mm	496 mm
ISO D-type - Extension	448 mm	455 mm
DIN D-type - Column	382 mm	396 mm
DIN D-type - Extension	348 mm	355 mm
ISO W-type - Column	682 mm	696 mm
ISO W-type - Extension	648 mm	655 mm

» Setup with shelves

Type	Stationary	Movable (max. 5 columns coupled)
Shelving 300 mm - Column	365 mm	379 mm
Shelving 300 mm - Extension	331 mm	338 mm
Shelving 600 mm - Column	665 mm	679 mm
Shelving 600 mm - Extension	631 mm	638 mm
Shelving 900 mm - Column	965 mm	979 mm
Shelving 900 mm - Extension	931 mm	938 mm
Shelving 1200 mm - Column	1265 mm	1279 mm
Shelving 1200 mm - Extension	1231 mm	1238 mm
Shelving 1500 mm - Column	1565 mm	1579 mm
Shelving 1500 mm - Extension	1531 mm	1538 mm
Shelving 1800 mm - Column	1865 mm	-
Shelving 1800 mm - Extension	1831 mm	-



» UBeFlex® storage system



» Stationary posts

Article Number	Description	Depth	Height
16010 00091	ISO and DIN D-type	600 mm	2040 mm
16010 00037	ISO W-type	400 mm	2040 mm
16010 00066	Wall mounting (screw included)		
16010 00095	Floor mounting - stainless steel (including screws)		



» Posts with castors*

Article Number	Description	Depth	Height incl. castors
16010 00038	ISO and DIN D-type	600 mm	1960 mm
16010 00039	ISO W-type	400 mm	1960 mm

* Only for limited displacement in function of floor cleaning.

For open/closed internal and external transport, check www.belintra.com for the different solutions.



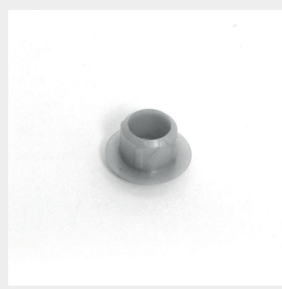
» Connection sets

Article Number	Description	Width
16010 00040	ISO D-type	400 mm
16010 00041	ISO W-type	600 mm
16010 00042	DIN D-type**	300 mm
16010 00097	XS D-type	280 mm



» Roof or bottom panel for columns with runners

Article Number	Description	Ext. Dimensions
16010 00030	ISO D-type	400 x 600 mm
16010 00031	ISO W-type	600 x 400 mm
16010 00065	DIN D-type	300 x 600 mm



» Cap for unused positions

Article Number	Description
99010 00020	100 pieces/bag

** For use in combination with D-type posts and DIN D-type runners. Filling with Sterisystem® Perfo-Safe® wire shelves and wire baskets DIN (300 x 600 mm).

UBeFlex® storage system



"Click"-runners (1 pair - left and right)

Article Number	Description	Type of runner	Length
16010 00011	ISO D-type	U+L runner	600 mm
16010 00012	ISO W-type	U+L runner	400 mm



DIN D-type runners (1 pair - left and right)

Article Number	Description	Type of runner	Length
16010 00068	DIN D-type	L runner	600 mm



Oblique runners*

Article Number	Description	Fixation
14005 00005	ISO D-type oblique	Turn-pin
14005 00006	ISO W-type oblique	Turn-pin

* Upon request



Catheter basket (without dividers)

Article Number	Description
16002 00020	ISO D-type - Equipped with telescopic runners and frame

UBeFlex® storage system



Catheter holder with adjustable hooks on melamine plate*

Article Number	Type	Description	Ext. Dimensions
1867580	ISO W-type	1 telescopic runner with 14 (2 x 7) hooks	600 x 400 mm
1867581	ISO W-type	2 telescopic runners with 14 (2 x 7) hooks	600 x 400 mm
1867582	ISO W-type	3 telescopic runners with 14 (2 x 7) hooks	600 x 400 mm
1867583	ISO D-type	1 telescopic runner with 20 (2 x 10) hooks	600 x 400 mm
1867584	ISO D-type	2 telescopic runners with 20 (2 x 10) hooks	600 x 400 mm

* Catheter holder only to be used in stationary racks.



Catheter holder with fixed hooks on melamine plate*

Article Number	Type	Description	Ext. Dimensions
1867590	ISO W-type	1 telescopic runner with 14 (2 x 7) hooks	600 x 400 mm
1867591	ISO W-type	2 telescopic runners with 14 (2 x 7) hooks	600 x 400 mm
1867592	ISO W-type	3 telescopic runners with 14 (2 x 7) hooks	600 x 400 mm
1867593	ISO D-type	1 telescopic runner with 20 (2 x 10) hooks	600 x 400 mm
1867594	ISO D-type	2 telescopic runners with 20 (2 x 10) hooks	600 x 400 mm

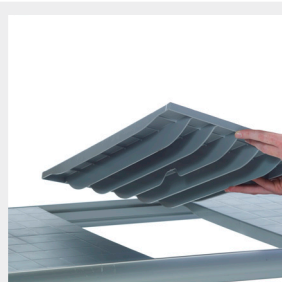
* Catheter holder only to be used in stationary racks.



UBeFlex® D-type set for full synthetic shelves

Article Number	Width	Depth	Description
16010 00043	300 mm (1 x 300 mm)	600 mm	Including shelves, profiles, hooks and caps
16010 00044	600 mm (2 x 300 mm)	600 mm	
16010 00048	1800* mm (6 x 300 mm)	600 mm	

* The 1800 mm shelves cannot be used in the mobile version.



UBeFlex® W-type set for full synthetic shelves

Article Number	Width	Depth	Description
16010 00049	300 mm (1 x 300 mm)	400 mm	Including shelves, profiles, hooks and caps
16010 00050	600 mm (2 x 300 mm)	400 mm	
16010 00051	900 mm (3 x 300 mm)	400 mm	
16010 00052	1200 mm (4 x 300 mm)	400 mm	
16010 00053	1500 mm (5 x 300 mm)	400 mm	
16010 00054	1800* mm (6 x 300 mm)	400 mm	

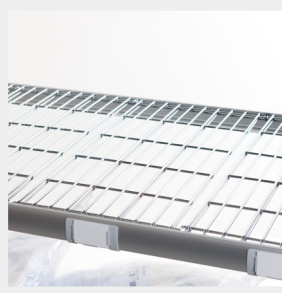
* The 1800 mm shelves cannot be used in the mobile version.

» UBeFlex® storage system



» UBeFlex® set of profiles for shelves

Article number	Description	
16010 00085	Set of profiles for shelf 300 mm *	Including hooks and caps, can also be used as a closing profile.
16010 00086	Set of profiles for shelf 600 mm *	
16010 00087	Set of profiles for shelf 900 mm *	
16010 00088	Set of profiles for shelf 1200 mm *	
16010 00089	Set of profiles for shelf 1500 mm *	
16010 00090	Set of profiles for shelf 1800 mm *	



» UBeFlex® shelves - excluding profiles

Article Number	Description	Ext. Dimensions
16010 00008	D-type full synthetic shelf	300 mm W x 600 mm D
16010 00009	W-type full synthetic shelf	300 mm W x 400 mm D
16010 00071	D-type open shelf in chromed steel	300 mm W x 600 mm D



» UBeFlex® D-type divider in chromed steel

Article Number

16010 00069



» Label holder for shelves - landscape

Article Number	Description	Ext. Dimensions
16010 00015	Label holder	-
15008 00021	Insert	60 x 40 mm



» Stepless label holder for adhesive labels for posts - portrait

Article Number	Description
16010 00121	Stepless label holder

» UBeFlex® storage system



» OptiScanBan® label holder for UBeFlex®/UBeTrack™ shelves

Article Number	Description
16010 00123	OptiScanBan® label holder



» Coloured PVC strips for posts

Article Number	Colour	Description	Length
16010 00076	Red	Conditioned per 10	2021 mm
16010 00077	Orange	Conditioned per 10	2021 mm
16010 00078	Blue	Conditioned per 10	2021 mm
16010 00079	Green	Conditioned per 10	2021 mm



» Telescopic runners with extension slide for containers* (MOQ: 100 pcs)

Article Number	Description	Max. weight	Ext. Dimensions
16002 00014	DIN D-type	15 kg	300 x 600 mm
16010 00066	Wall fixation for posts		

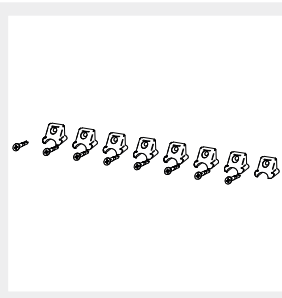
* Only to be used when wall fixation is planned. To be mounted up to a maximum height of 1 meter.



» Telescopic runners with extension slide for baskets*

Article Number	Description	Max. weight	Ext. Dimensions
16002 00008	ISO W-type	15 kg	600 x 400 mm
16002 00012	ISO D-type	15 kg	400 x 600 mm
16010 00066	Wall fixation for posts		

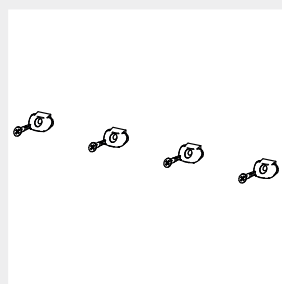
* Only to be used when wall fixation is planned. To be mounted up to a maximum height of 1 meter.



» Spacer lockers

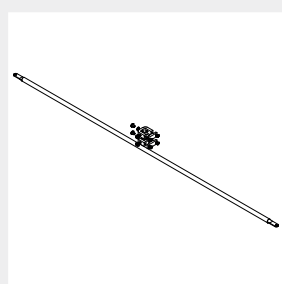
Article Number	Description
16010 00124	Included with the mobile posts, for the stationary posts to be ordered separately if required

» UBeFlex® storage system



» Spacer lockers in combination with roof/bottom panels

Article Number	Description
16010 00125	Included with the roof/bottom panels



» Back reinforcement kit

Article Number	Description
16010 00104	Required for certain configurations

UBeTrack™ mobile storage system

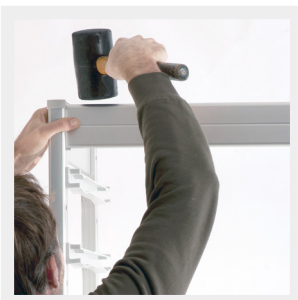


UBeTrack™ is a space-saving storage system with mobile racks.

The structure is very light so the mobile racks can be moved quickly. The result is a unique storage system made from anodized aluminium and high-quality, antistatic synthetic materials, which means it can be used in both sterile storage and non-sterile environments.

By positioning the runner system at the top good hygiene is guaranteed and it is easy to get past with transport trolleys.

The modular, space-saving UBeTrack™ storage system is a hygienic solution for small spaces with which you save up to 75% of corridor space and up to 33% of the total footprint.



» Easy assembly

The UBeTrack™ assembly is based on the UBeFlex® concept so it is easy and very quick to assemble. Since we use a single tracking system which is positioned on top of the unit and wheels on the bottom, there is no need for a track on the floor. Nothing to trip over!

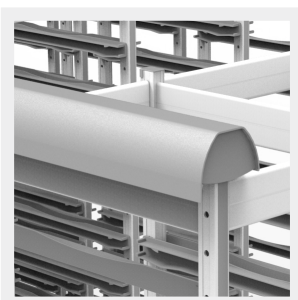
The packages containing the parts are easy to carry and fit in a standard lift.



» Modular construction

ISO D-type and DIN D-type columns can be combined with each other and with D-type shelves of up to 1200 mm. The same shelf-combinations must be fitted within one block however.

The maximum depth for working ergonomically is around 2300 mm. For example, this corresponds with 5 ISO D-type columns or 6 DIN D-type columns whether combined with shelves or not.



» Hygienic

The tracking system, which is positioned at the top, has a protective cover over it preventing dust from falling on and accumulating in the track. This also allows for easy cleaning and disinfecting.

This top mounted track keeps floors clear and allows for easy cleaning of the floors and easy navigating through the unit with carts or trolleys.



» Design

With regard appearance the design fits in seamlessly with the existing UBeFlex® range so that both can be combined beautifully in one space.



» Castors

The wheels on the mobile shelves have very low rolling resistance.



» Extremely strong

In column set-up, UBeTrack™ has a load capacity of 25 kg per pair of runners and in shelf set-up max. 15 kg per shelf element. For details, see technical data sheet.



» Optimum labeling

The shelves can be fitted with newly designed "click" label holders. These simply click onto any position on the front of the shelf and can be fitted with an insert. Because these label holders do not protrude above the edge of the shelf, you can take larger packets or containers from the shelves without a hitch.

There are specific label holders for the columns that can also simply be clicked onto the profiles. All versions can be found further back.

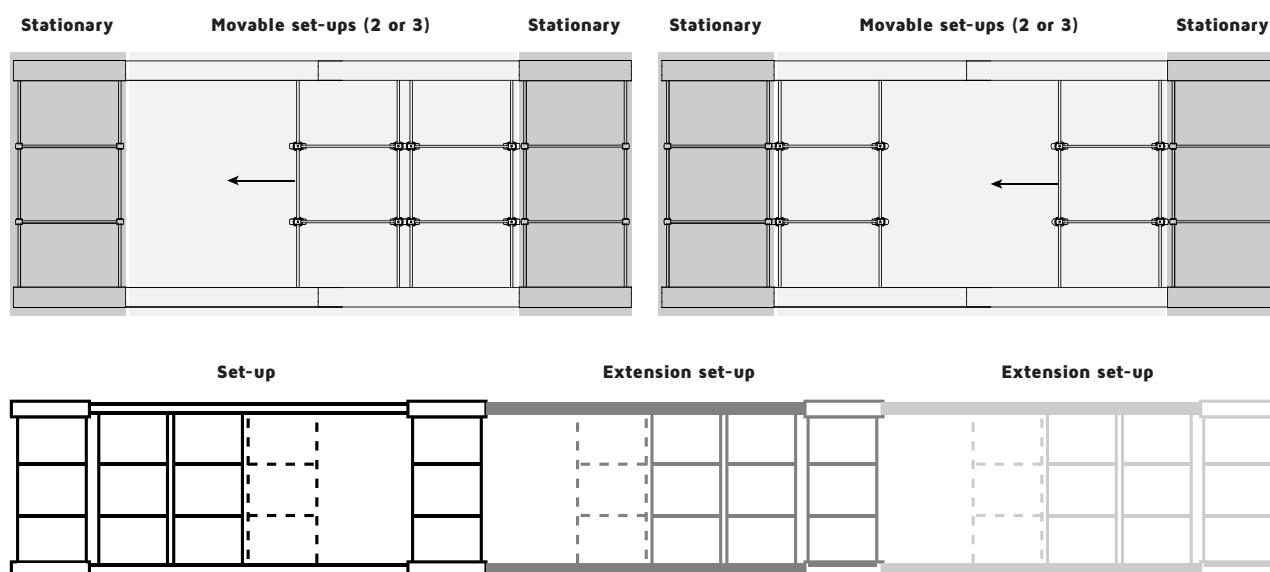


» Identification

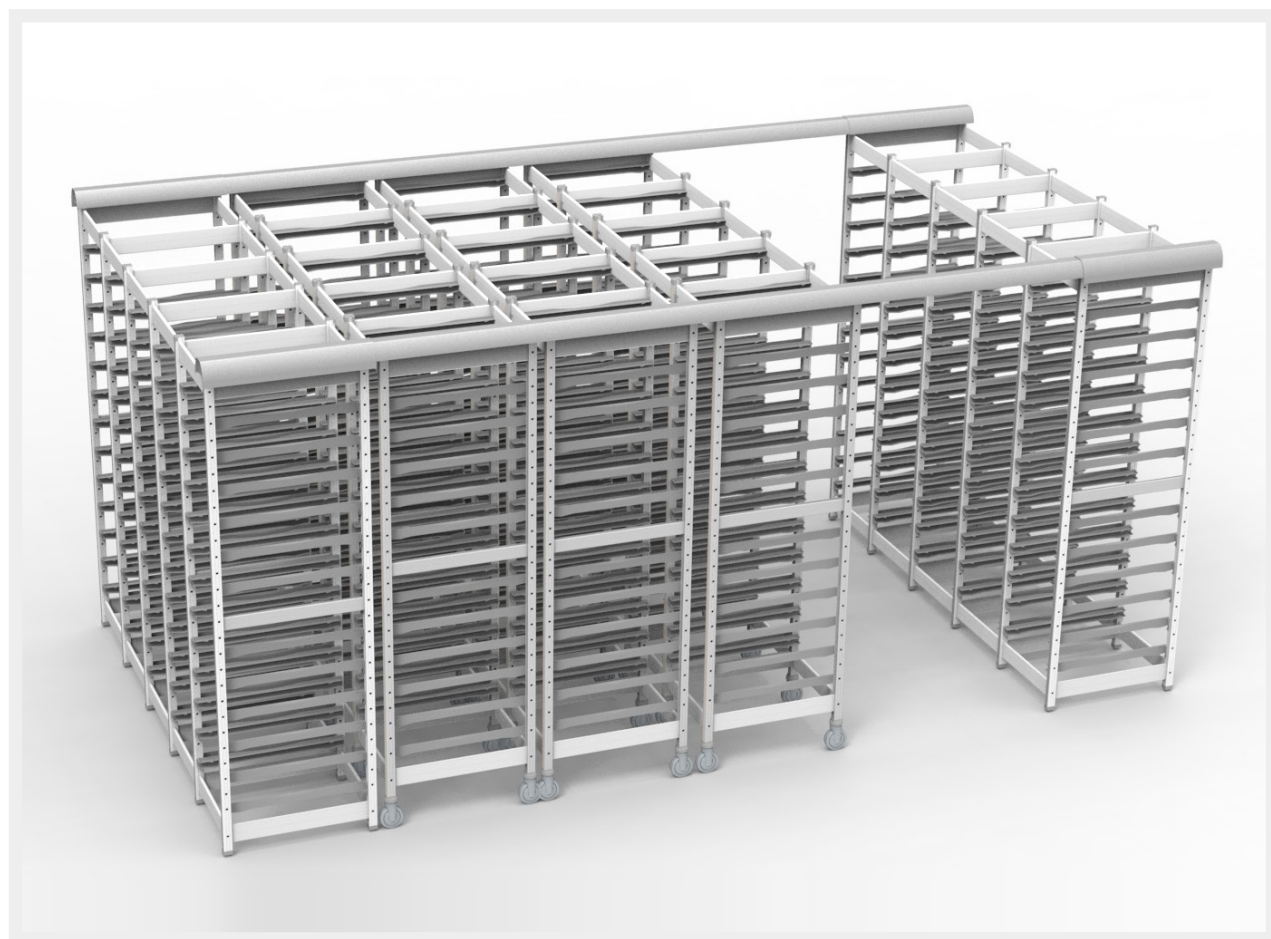
As an option you can fit the UBeTrack™ with coloured PVC strips (packs of 10) to replace the standard grey profiles to personalize your storage per department or, for example, to use colour coding for location allocation per discipline in the storage within your CSSD.

» Operation and construction of set-ups

The UBeTrack™ always consists of 1 full set-up that additional extension set-ups can be linked to.



One UBeTrack™ can consist of 2 or 3 mobile shelves. The total width can vary, see the illustration below. This can be increased in 25 mm increments up to a maximum of 250 mm which in turn alters the width of the walkway.



» UBeTrack™ mobile storage system

A UBeTrack™ installation consists of specific UBeTrack™ components completed with UBeFlex® parts.



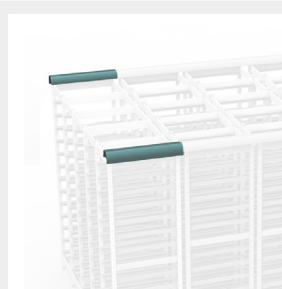
» UBeFlex®/UBeTrack™ stationary post for outer racks

Article number	Description
16010 00091	ISO and DIN D-type



» UBeTrack™ mobile post for inner racks

Article number	Description
16011 00012	ISO and DIN D-type



» UBeTrack™ assembly kit

Article number	Description
16011 00015	1 per stationary rack



» UBeTrack™ track kit (2 to order per unit)

Article number	Description
16011 00013	1500 mm - For 2 mobile inner racks
16011 00014	1850 mm - For 3 mobile inner racks



» UBeTrack™ set of guide rollers for track kit

Article number	Description
16011 00018	1 per mobile rack

» UBeTrack™ mobile storage system



» UBeFlex® connection sets

Article Number	Description	Width
16010 00040	ISO D-type	400 mm
16010 00042	DIN D-type	300 mm



» UBeFlex® top or base panel for columns with runners

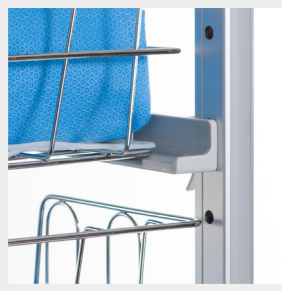
Article Number	Description	Ext. Dimensions
16010 00030	ISO D-type	400 x 600 mm
16010 00065	DIN D-type	300 x 600 mm

* Top or base panels are mandatory for columns with runners.



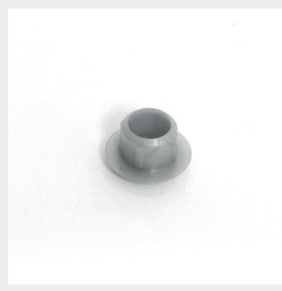
» UBeFlex® ISO D-type "Click"-runners (1 pair - left and right)

Article Number	Description	Type of runner	Length
16010 00011	ISO D-type	U+L runner	600 mm



» UBeFlex® DIN D-type "Click"-runners (1 pair - left and right)

Article Number	Description	Type of runner	Length
16010 00068	DIN D-type	L runner	600 mm



» UBeFlex® cap for unused positions

Article Number	Description
99010 00020	100 pieces/bag

UBeTrack™ mobile storage system



UBeFlex® D-type set for full synthetic shelves

Article Number	Width	Depth	Description
16010 00043	300 mm (1 x 300 mm)	600 mm	Including shelves, profiles, hooks and caps
16010 00044	600 mm (2 x 300 mm)	600 mm	



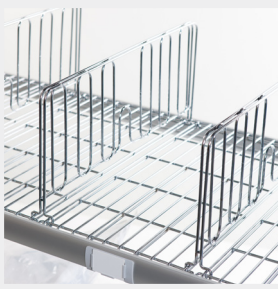
UBeFlex® D-type shelves - excluding profiles

Article Number	Description	Ext. Dimensions
16010 00008	D-type full synthetic shelf	300 mm W x 600 mm D
16010 00071	D-type open shelf in chromed steel	300 mm W x 600 mm D



UBeFlex® set of profiles for open shelves

Article number	Description	Including hooks and caps, can also be used as a closing profile.
16010 00085	Set of profiles for shelf 300 mm *	
16010 00086	Set of profiles for shelf 600 mm *	
16010 00087	Set of profiles for shelf 900 mm *	
16010 00088	Set of profiles for shelf 1200 mm *	



UBeFlex® D-type divider in chromed steel

Article Number	Ext. Dimensions
16010 00069	300 x 600 mm

» UBeTrack™ mobile storage system



» Catheter holder with adjustable hooks on melamine plate*

Article Number	Type	Description	Ext. Dimensions
1867580	ISO W-type	1 telescopic runner with 14 (2 x 7) hooks	600 x 400 mm
1867581	ISO W-type	2 telescopic runners with 14 (2 x 7) hooks	600 x 400 mm
1867582	ISO W-type	3 telescopic runners with 14 (2 x 7) hooks	600 x 400 mm
1867583	ISO D-type	1 telescopic runner with 20 (2 x 10) hooks	600 x 400 mm
1867584	ISO D-type	2 telescopic runners with 20 (2 x 10) hooks	600 x 400 mm

* Catheter holder only to be used in stationary racks.



» Catheter holder with fixed hooks on melamine plate*

Article Number	Type	Description	Ext. Dimensions
1867590	ISO W-type	1 telescopic runner with 14 (2 x 7) hooks	600 x 400 mm
1867591	ISO W-type	2 telescopic runners with 14 (2 x 7) hooks	600 x 400 mm
1867592	ISO W-type	3 telescopic runners with 14 (2 x 7) hooks	600 x 400 mm
1867593	ISO D-type	1 telescopic runner with 20 (2 x 10) hooks	600 x 400 mm
1867594	ISO D-type	2 telescopic runners with 20 (2 x 10) hooks	600 x 400 mm

* Catheter holder only to be used in stationary racks.



» Label holder for shelves - landscape

Article Number	Description	Ext. Dimensions
16010 00015	Label holder	-
15008 00021	Insert	60 x 40 mm



» Stepless label holder for adhesive labels for posts - portrait

Article Number	Description
16010 00121	Stepless label holder

» UBeTrack™ mobile storage system



» OptiScanBan® label holder for UBeFlex®/UBeTrack™ shelves

Article Number	Description
16010 00123	OptiScanBan® label holder



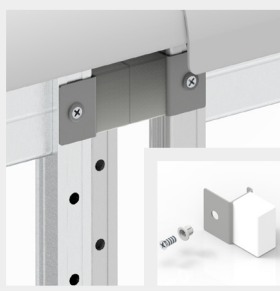
» Coloured PVC strips for posts

Article Number	Colour	Description	Length
16010 00076	Red	Conditioned per 10	2021 mm
16010 00077	Orange	Conditioned per 10	2021 mm
16010 00078	Blue	Conditioned per 10	2021 mm
16010 00079	Green	Conditioned per 10	2021 mm



» Vertical handles for inner racks

Article Number	Description
<u>18002 00005</u>	Set of handles
16011 00017	UBeTrack™ assembly kit for vertical handles



» Bumper for UBeTrack™

Article Number	Description
16011 00019	Set of 4 synthetic bumpers incl. screws

Standard article (non-standard articles have a longer delivery time)



